

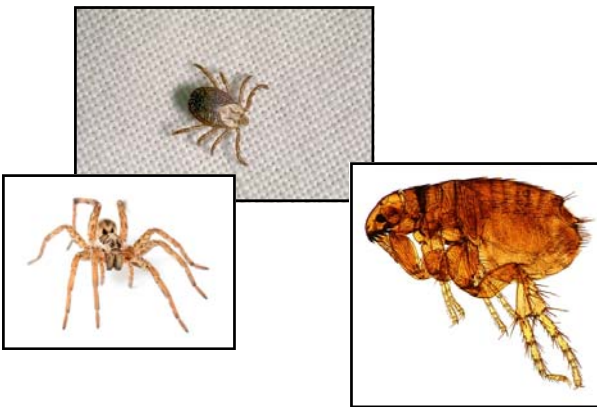


INNOVATIVE and AUSTRALIAN

DIAZINON

DIAZINON

Used by pest controllers for outside spraying



In situations including Commercial and Industrial Buildings, Homes, Flats, Farm Buildings and Refuse areas. As outlined in the directions of use table.

A versatile broad spectrum insecticide with contact and stomach poison activity.

Active Constituent: 800 g/L DIAZINON



FOR CONTROL OF PESTS INCLUDING:

- Cockroaches
- Fleas
- Flies
- Spiders
- Ants
- Silver Fish
- Bed Bugs

Barmac **DIAZINON** Insecticide is a versatile general insecticide commonly used by pest controllers for outside spraying. The products low cost makes it an attractive option when large areas need treating or repeated treatments are required. It is especially useful in resistance management rotations with the synthetic pyrethroid group of insecticides.

PACK SIZE:

Available in 5 litres.

For more information about DIAZINON or other BARMAC products visit www.barmac.com.au or one of our distributors.
Barmac Industries Pty Ltd Swanbank Australia



www.barmac.com.au

DIRECTIONS FOR USE:

SITUATION	PEST	STATE	RATE			CRITICAL COMMENTS
			SPRAYER	MISTER	SWINGFOG	
Commercial and Industrial Buildings, Ships, Farm Buildings including Kennels, Stables and Piggeries, Refuse Areas, Garbage Containers	Cockroaches, Silverfish, Carpet Beetles, Fleas, Flies, Spiders	All States			60 mL per litre of fogging oil or distillate	Do Not use where there is exposed food, food utensils or food processing machinery. Do Not use in food preparation areas, eg kitchens, tea rooms. Avoid fogging drinking water or feedstuffs.
Homes, Flats, Hotels, Bakeries Canteens,	Cockroaches, Silverfish,		6 mL per litre of	15 mL per litre of		Apply to crevices, cracks and hiding places, eg beneath cupboards, behind sinks and stoves.
Commercial and Industrial Buildings, Ships, Farm Buildings including Kennels, Stables and Piggeries, Refuse Areas, Garbage Containers	Carpet Beetles, Bed Bugs		water or kerosene	water or kerosene		Apply to floors and under carpets
	Fleas					Spray should be applied under beds, along skirting boards and anywhere bed bugs may be able to shelter, as well as lightly to bedding.
	Flies		6 mL per litre of			Areas generally infested with fleas should be sprayed as well as sleeping and resting areas of pets. Change infested bedding.
	Spiders		water			Apply to surfaces on which insects congregate, eg ceilings, under eaves, walls
	Ants					Remove existing webbing and saturate area with the mixture.
Refuse Areas, Garbage Containers	Maggots		60 mL per 100 litres of water	15 mL per litre of water or kerosene	60 mL per litre of fogging oil or distillate.	Apply to thoroughly penetrate the refuse.