



INNOVATIVE and AUSTRALIAN

DIAMOND GRINDING GEL

Superior Backlapping Paste



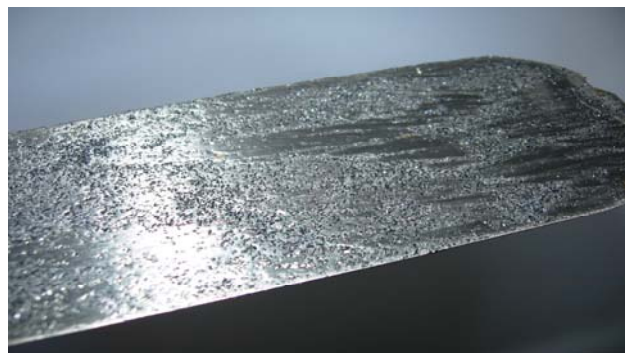
Diamonds are the hardest substance known to man, and their use in Barmac DIAMOND GRINDING GEL ensures that cutting blades result in a sharper edge. The increase in blade sharpness results in a faster cut with a cleaner finish.

The use of the highest quality grinding paste has been proven to give a superior turf cut. This results in a faster, higher quality playing surface. The increase in blade sharpness also has additional benefits. The reduced tearing and bruising of the leaf means less cell damage and less likelihood of fungal disease infections.

Scientifically formulated Barmac **DIAMOND GRINDING GEL** is:

- An environmentally safe abrasive compound which does not cause harm to the turf.

- pH is neutral, so it is at the optimum for most turf varieties therefore will not cause damage to the turf and will not cause variation in pH in the turf.
- Washes off easily with a normal garden hose therefore saving time and cost on cleaning.
- Is formulated so the abrasive does not settle out.
- Has additives to ensure product remains tacky and sticks to the blade (not on the floor or operator).
- Has lubricants to dissipate heat on the blades which prevents heat gathering in one area creating the blade to warp.
- Rust inhibitors to reduce corrosion, helping to protect the equipment and ensure longer lasting tools.
- Contains industrial diamonds to provide a faster cutting action with a sharper edge.



PACK SIZE:

Available in 1 and 5 kg buckets.

DIAMOND GRINDING GEL



www.barmac.com.au

For more information about DIAMOND GRINDING GEL or other BARMAC products visit www.barmac.com.au or one of our distributors.
Barmac Industries Pty Ltd Swanbank Australia

RECOMMENDATIONS

Follow Equipment Manufacturers Instructions for Lapping

Barmac **DIAMOND GRINDING GEL** produces diamond sharp blade for the finest cut turf possible. Correctly adjust the bed knife to ensure a light, even contact over the entire length of the blade. Turn cylinder backwards at 100-150 RPM so that compound will not be thrown away from the bed knife and cylinder. While the reel is turning, apply Barmac **DIAMOND GRINDING GEL** with a long-handled Paintbrush working from one end to the other in alternate directions. Allow unit to keep running until cylinder is quiet.

CAUTION: Keep hands away when applying grinding gel. Disconnect Lapping machine. Flush cylinder with water to remove excess compound.

Spin reel backwards by hand and adjust for a very light uniform metal to metal contact. Then slowly rotate the cylinder forward and if necessary make a further adjustment so that each blade will cut paper across the entire length of the blade. The optimum adjustment is no contact and no clearance.

WARNING: Do not touch the cutting blades. Exercise caution when working with sharp and moving parts.