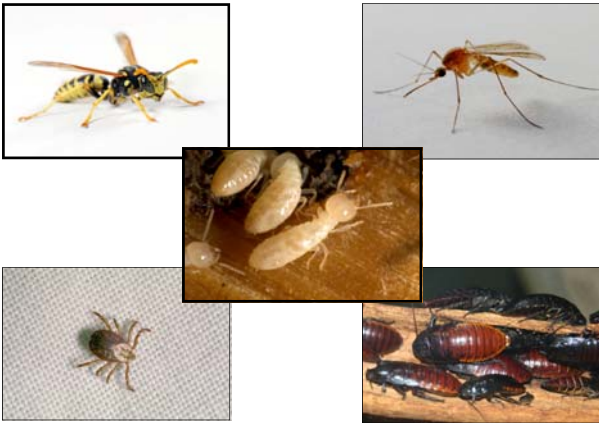




INNOVATIVE and AUSTRALIAN

BARFLEX

BARFLEX Termiticide and insecticide



BARFLEX Termiticide and Insecticide will help prevent and control subterranean termite infestations in and around buildings and structures when used in accordance with the Australian Standard AS 3660 Series, Termite Management. A dilute termiticide emulsion must be adequately dispersed into the soil to establish a barrier between the building and subterranean termites in the soil. The purpose of a termite barrier is to prevent concealed termite entry into the building.

For the protection of structures from subterranean termite damage and from the control of termites and a range of other urban pests.

Active Constituent: 100g/ L BIFENTHRIN.

For use only by licensed pest control operators.

For use in:

- Pre construction Barriers
- Perimeter Barriers
- Post-Construction Barriers
- Reticulation Systems
- Nest Eradication
- And as a surface spray for the control of a wide variety of general pest species.

BARFLEX Termiticide and Insecticide is a powerful knockdown and residual insecticide. Ants, Cockroaches, Fleas, Flies, Mosquitoes, Spiders Ticks and Wasps are controlled by direct contact with spray and also by residual action as they come into contact with treated surfaces.



Several factors contribute to longevity of the termite treatment and must be considered when evaluating the need for re-treatment. The actual protection period will depend on termite hazard, climate, soil conditions and rate of termiticide used.

PACK SIZE:

Available in 20 Litre containers.

For more information about BARFLEX or other BARMAC products visit www.barmac.com.au or one of our distributors.
Barmac Industries Pty Ltd Swanbank Australia

www.barmac.com.au

DIRECTIONS OF USE:

Restraints:

Do NOT use this product at less than indicated label rates.

Do NOT apply to soils if excessively wet or immediately after heavy rain to avoid run-off of the chemical.

Do NOT use in cavity walls (except via certified cavity infill reticulation systems or direct treatment of nest).

Pest	Situations	State	Rate	Critical Comments
Spiders	External Areas & Surrounds of Domestic, Commercial, Public & Industrial buildings and structures	All states	25-50 ml/10L	<p>Use the higher rate in situations where pest pressure is high, when rapid knockdown and/or maximum residual protection is desired. Pay particular attention to protected dark areas such as cracks and crevices, under floors, eaves and other known hiding or resting places. For overall band surface spray, apply as a coarse, low pressure surface spray to areas where spiders hide, frequent and rest. Spray to the point of run-off using around 5L of spray mixture per 100m² and ensuring through coverage of the treated surfaces.</p> <p>For crack and crevice treatment use an appropriate solid stream nozzle. For maximum spider control use a two part treatment.</p> <p>Crack and crevice. Overall band spray of surfaces.</p>
Papernest Wasps	External Areas & Surrounds of Domestic, Commercial, Public & Industrial buildings and structures	All states	50 mL/10L	Apply prepared emulsion to the point of runoff directly to the papernest ensuring through and even coverage. When all adult wasps have been knocked-down the nest may be safely removed from the structure.
Ants, Cockroaches, Mosquitoes, Fleas, Flies, Ticks (excluding the paralysis tick <i>Ixodes holocyclus</i>) (Adults & Nymphs)	External Areas & Surrounds of Domestic, Commercial, Public & Industrial buildings and structures	All states	50 – 100 mL/10L	<p>On non-porous surfaces apply as a coarse spray at the rate of 1L of emulsion per 20m². When treating non-porous surfaces do not exceed the point of run-off.</p> <p>On porous surfaces or use through power equipment, spray at the rate of 1L of emulsion per 10m². When treating porous surfaces do not exceed the point of run-off.</p> <p>Use the higher rate in situations where pest pressure is high, when rapid knockdown and/or maximum residual protection is desired. The lower rate may be used for follow-up treatments.</p> <p>To control ants apply to trails and nests. Repeat as necessary.</p> <p>To control fleas and ticks apply prepared emulsion to outside surfaces of buildings and surrounds including but not limited to foundations, verandahs, window frames, eaves, patios, garages, pet housing, soil, turf, trunks of woody ornamentals or other areas where pests congregate or have been seen.</p> <p>To control flies and mosquitoes apply prepared emulsion to surfaces where insects rest or harbour. Reapply as necessary.</p> <p>For perimeter treatments apply the prepared emulsion to a band of soil or vegetation two to three meters wide around and adjacent to the structure. Also spray volume of 5 to 10L per 100m². Higher volumes of water may be needed if organic matter is present or foliage is dense.</p>
Subterranean Termites	Domestic, Public, Commercial & Industrial areas	All states, except Tas	Refer to Table A	Refer to Table B.